

OCEAN ZONES FACTS

Zone 1: Sunlight (Epipelagic Zone, 0–200m below the surface)

Contains 90% of all ocean life, most animals and ALL of the plants. Dolphins, sea turtles, and most other air-breathers need to live in this zone. It is the warmest zone, and it gets enough sunlight to support photosynthesis. Plankton, seaweed, algae, seagrass, jellyfish, coral, turtles, orcas, dolphins, bigeye tuna, blue whales, sharks, angelfish, oysters.

Zone 2: Twilight (Mesopelagic Zone, 200–1,000m below the surface)

No plants grow in this zone because it doesn't have enough sunlight for photosynthesis. Animals in this zone either eat each other or floating bits that sink from the sunlight zone. Some bioluminescent animals live here, and some whales can dive into this zone too. Most fish in this zone are highly mobile, with muscular bodies and rigid bones. Sponges, octopuses, sperm whales, squid, crab, cuttlefish, swordfish, wolf eels, gulper eels, bigeye tuna, viperfish, hatchet fish.

Zone 3: Midnight (Bathypelagic Zone, 1,000–4,000m below the surface)

This zone is completely dark! Bioluminescence is the only source of light. It is cold and has very high water pressure. This zone goes all the way down to the deepest part of the ocean, the Mariana Trench in the Pacific Ocean, which is about 6.8 miles (11 km) deep. Fish here tend to have huge mouths that let them swallow everything that comes their way. Sea stars, octopuses, squid, large whales, frilled sharks.

Zone 4: Abyss (Abyssopelagic Zone, 4,000–6,000m below the surface)

Near freezing and low in oxygen, food, and nutrients. Fish often have no eyes. Anglerfish, Deep Sea/Humpback Anglerfish, deep sea jellyfish, tripod fish, cookiecutter shark, abyssal octopus.

Zone 5: Deep Trenches (Hadalpelagic Zone, 6,000–11,000m below the surface)

Freezing temperatures, heavy pressure, intense darkness. Mostly invertebrates. Sea cucumber, tube worms, deep-water squids, basket stars, sea pigs, sea spiders, star fish.

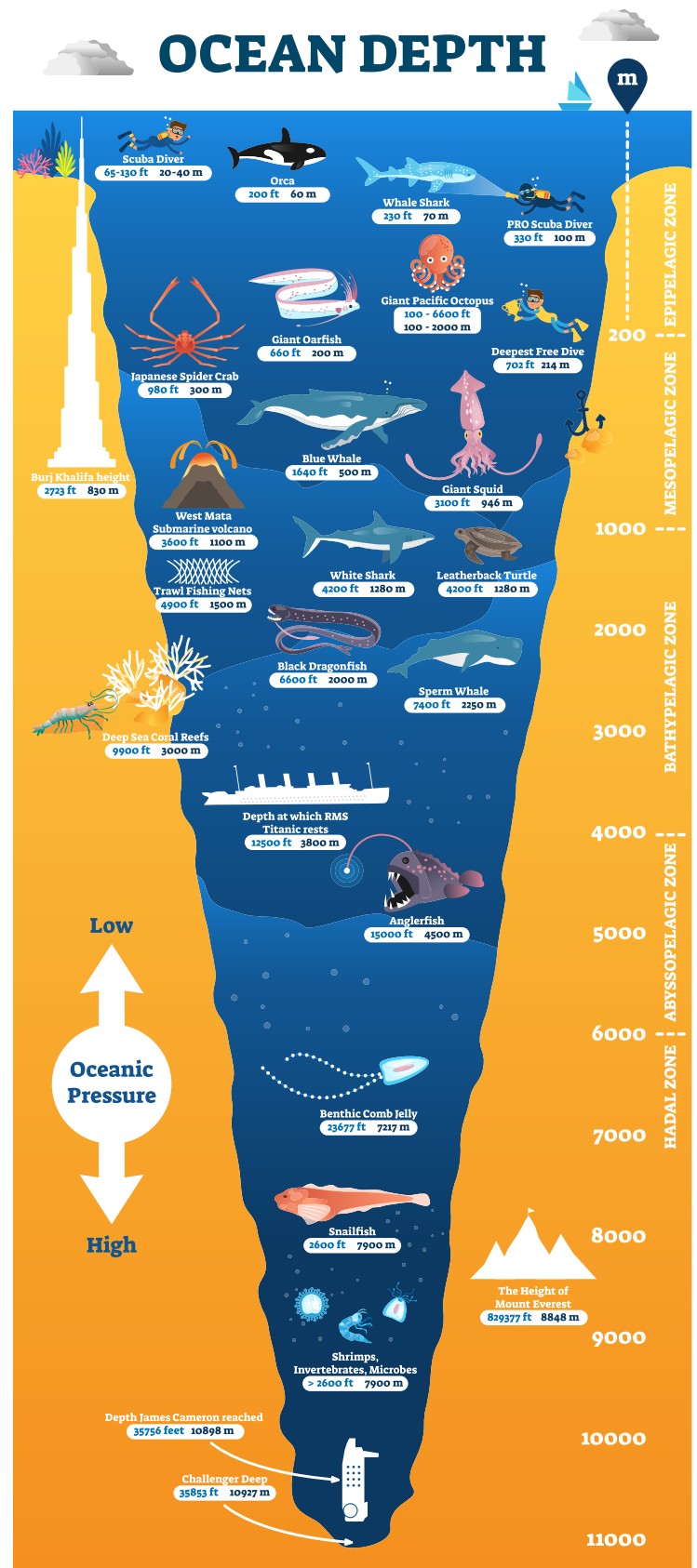


Image source: Shutterstock